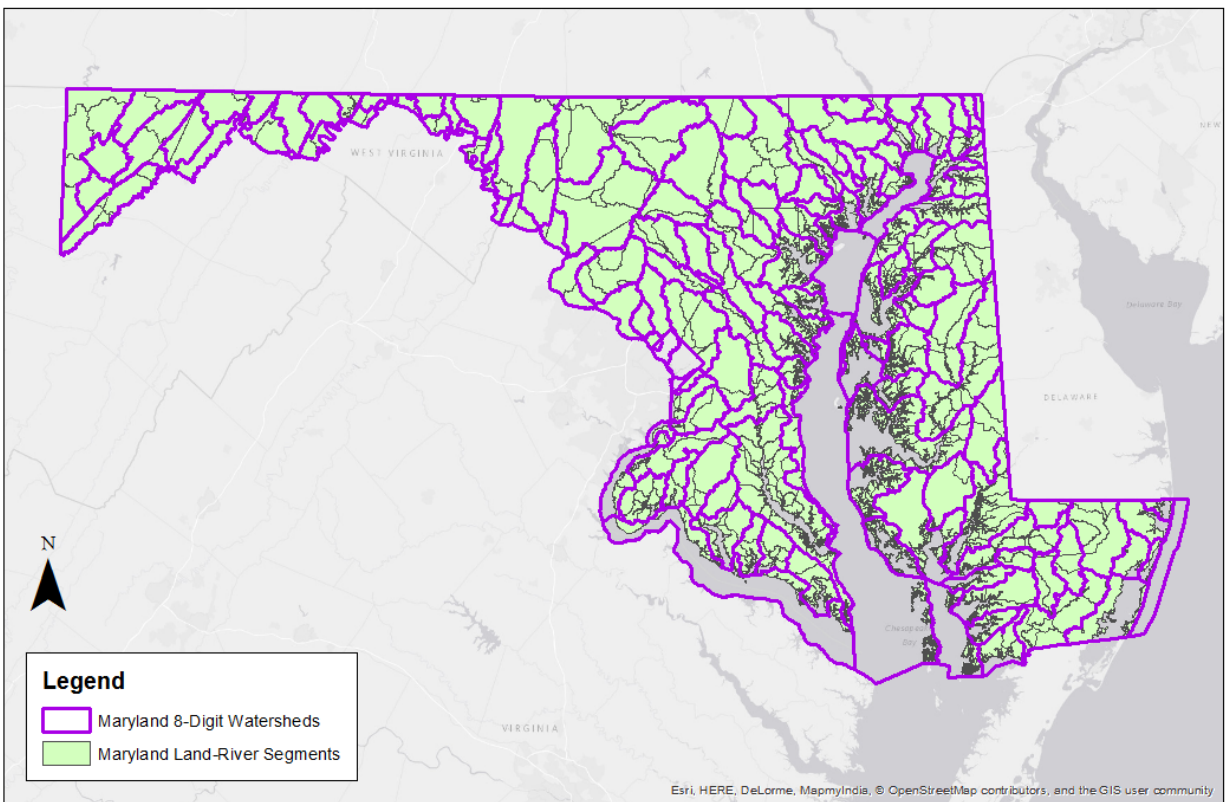
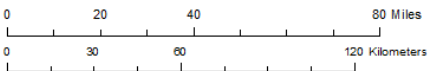


# Comparison of Maryland 8-Digit and CAST land-river segments

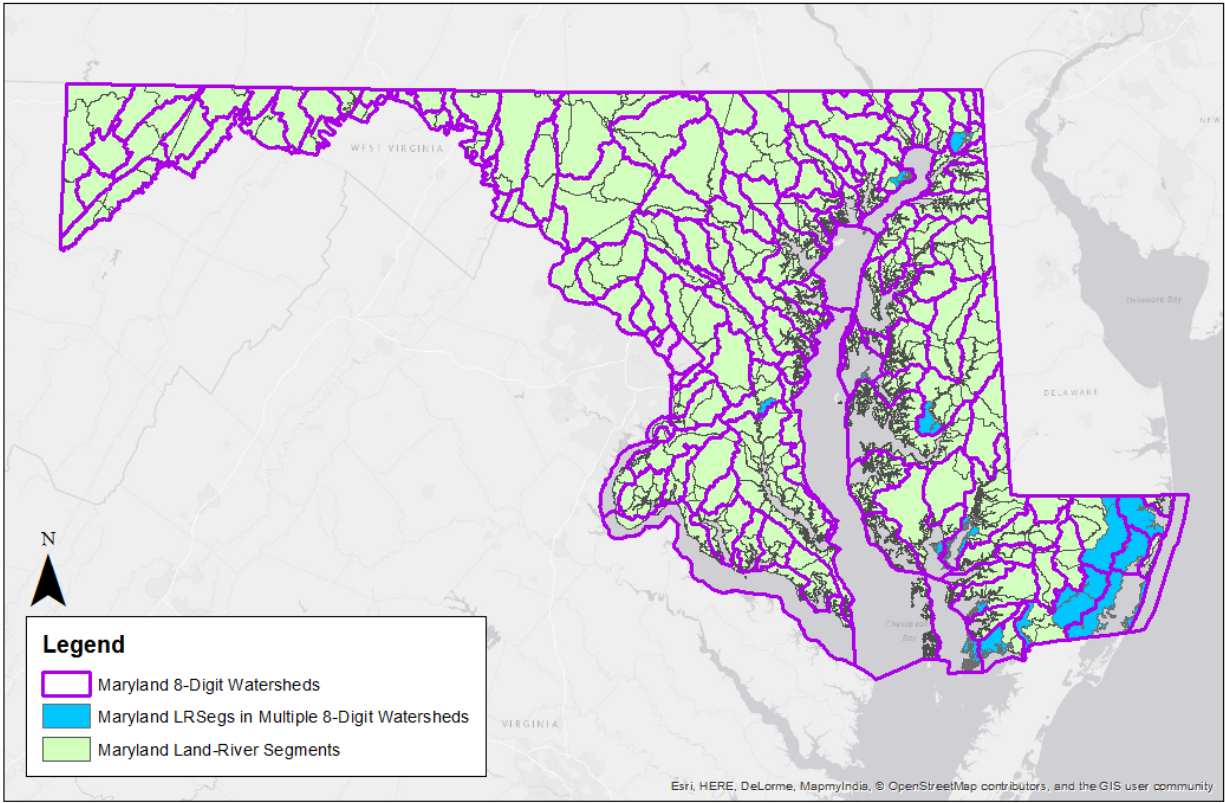
MDE provided these images to show that the Maryland 8-digits and the CAST land-river segments do not nest within each other. There are some MD 8-digits that overlap more than one land-river segment. When using CAST, consider selecting a larger scale that encompasses a MD 8-digit, like a USGS Hydrologic Unit Code (HUC) 8 or HUC 10. Alternatively, create a scenario at some geography and calculate the pounds per acre. Then multiply the pounds per acre by the acres in your MD 8-digit for each land use.



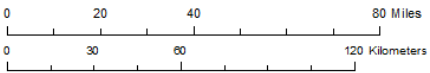
**Maryland Land River Segments and 8-Digit Watersheds**



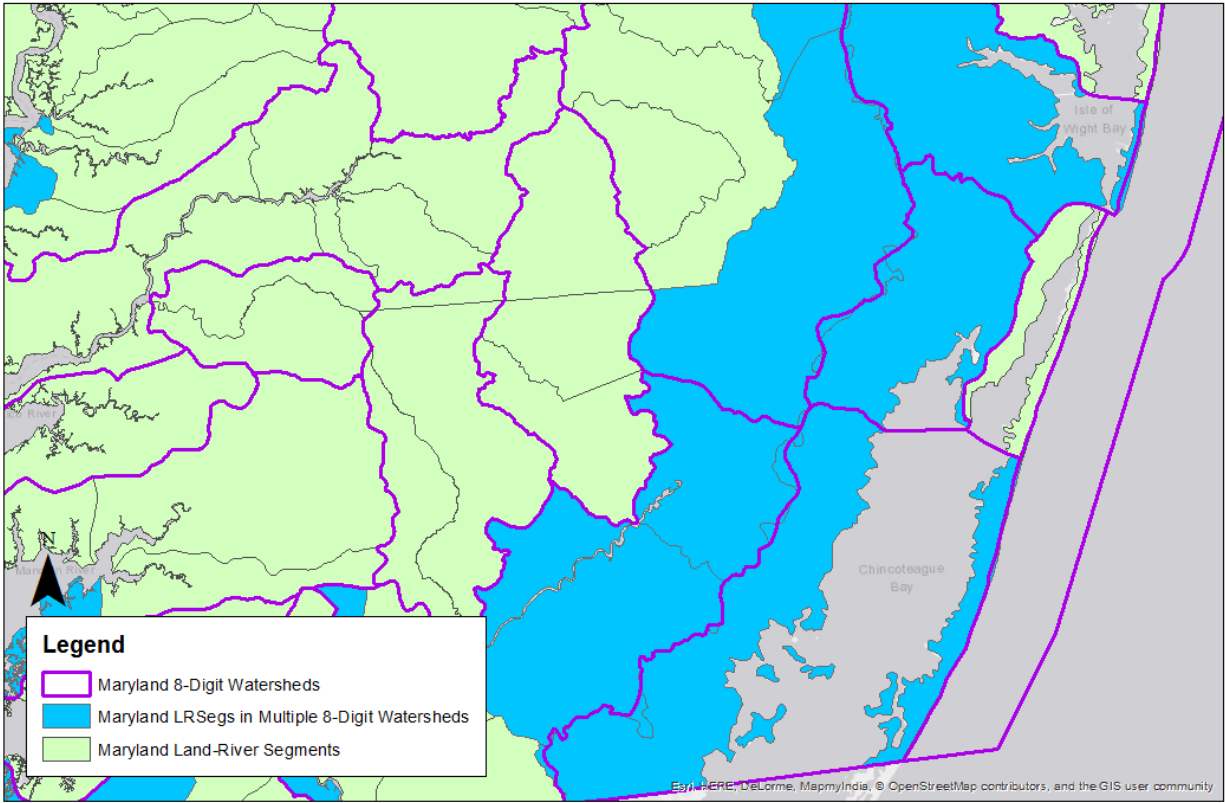
Data Sources:  
Land-River Segments: MDE  
8-Digit Watersheds: MDE



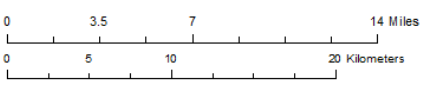
## Maryland Land River Segments in Multiple 8-Digit Watersheds



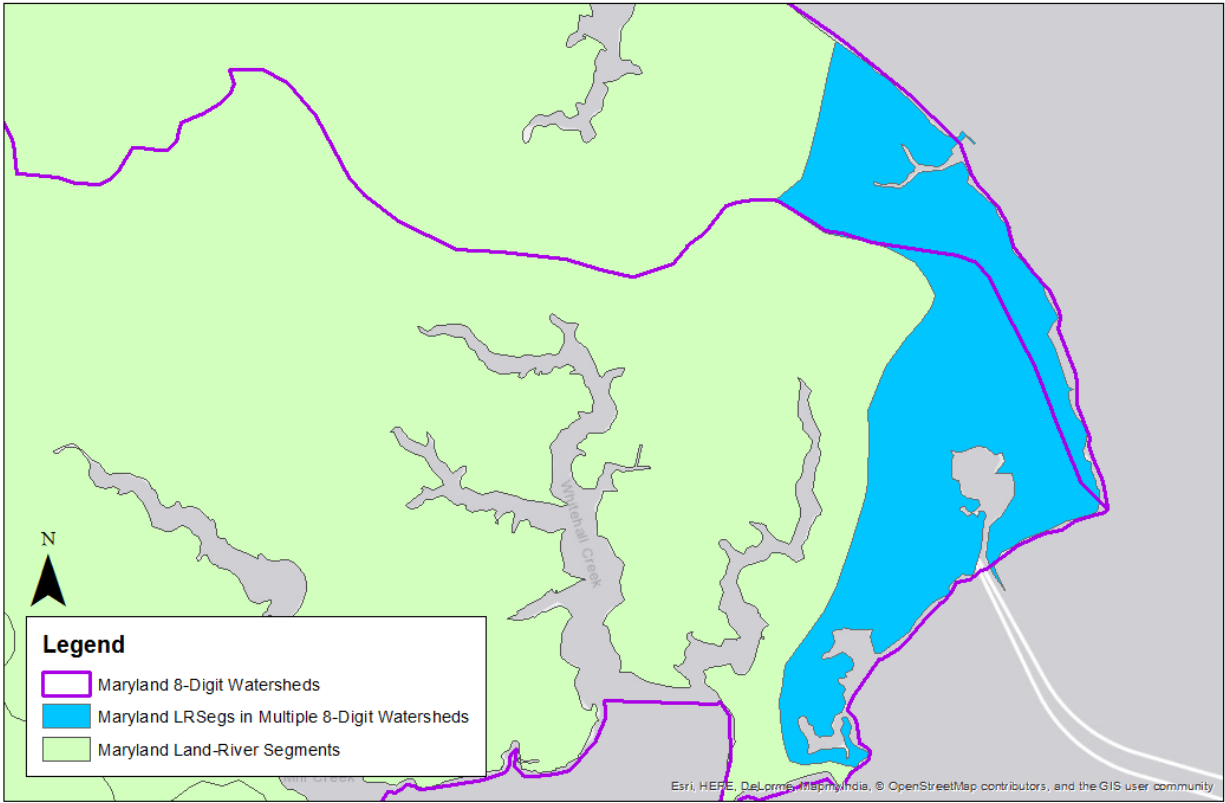
Data Sources:  
 Land-River Segments: MDE  
 8-Digit Watersheds: MDE



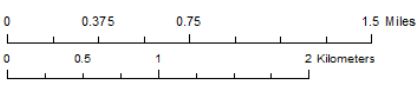
### Maryland Land River Segments in Multiple 8-Digit Watersheds



Data Sources:  
 Land-River Segments: MDE  
 8-Digit Watersheds: MDE



**Maryland Land River Segments in Multiple 8-Digit Watersheds**



Data Sources:  
 Land-River Segments: MDE  
 8-Digit Watersheds: MDE

**Data and images prepared by:**  
 Shannon McKenrick  
 Integrated Water Planning Program  
 Maryland Department of the Environment  
 1800 Washington Blvd., Suite 540  
 phone: 410-537-4418  
 email: [shannon.mckenrick@maryland.gov](mailto:shannon.mckenrick@maryland.gov)

April 19, 2018